

# SYNERGY & PROSPERITY BUILDING MATERIAL TRADING & TECHNICAL SERVICES LLC

Resin Bound | Soil & Sand Stabilizer | Wall Paint

- ✓ **Direct-From-Factory Supply**
- ✓ **UAE Storage, Service & Installation**

# COMPANY PROFILE



Synergy & Prosperity is a landscape material supply and installation platform , established in 2024 in the UAE to bridge global innovation with Middle Eastern market needs. Our products have secured **approval from the Department of Municipalities and Transport (DMT)** in Abu Dhabi, UAE, and have been used across residential and commercial developments, including villas, community parks, and real estate projects. We craft customized landscaping solutions tailored to the UAE's unique climate, cultural heritage, and visionary architectural aspirations, delivering premium quality and enduring value.

## 20 Years Global Expertise

- Founders own coating factory
- Extensive know-how in coating business; deep connection in industry.

## Trusted Partnerships

- Collaborations with leading suppliers & contractors across numerous high-profile projects.

**AL FIRDOUS OASIS**  
GENERAL TRANSPORT LLC



ترايسٲار للهندسة والانشاءات  
Tristar Engineering & Construction

**Basatin**  
landscaping LLC



**بساتين**  
لتنسيق الحدائق ذم.م



## Direct Tie to Factory

- Procuring straight from factories to offer most competitive prices.
- Bringing latest innovations to the market.

## Built-For-UAE Service

- Shipping from local warehouse to maximize flexibility & minimize project downtime.
- Multi-lingual, multi-cultural, locally-based team understands regional preferences & offers precise solutions.

# FACTORY OWNERSHIP

## Guangzhou GBS

The founders of this platform owns GBS, an established chemical material supply in China. Guangzhou GBS High-Tech & Industry Co., Ltd., established in 2001, is a globally recognized leader in the research, development, and manufacturing of high-performance resin & coating chemicals. With over two decades of history, GBS has cemented its reputation as an innovator in resin-bound solutions, delivering cutting-edge products that redefine durability, aesthetics, and sustainability.

### Pioneering R&D

Proprietary chemical formulas backed by 30+ patents

Collaborations with SOEs & top-tier university in advanced research

### High Production Standards of Quality

ISO 9001 Certification

Robust QC Systems & Scalable Capacity

Commitment to Innovation & Sustainability

Emission-free chemicals

Design-to-last products

Continuous research in green construction & smart cities





# RESIN BOUND

# TERRATIGHT™ PU

---



TerraTight™ PU (Chemical name: PU-211) is a transparent two-component polyurethane adhesive for indoor and outdoor resin-bound rock aggregate floor construction. This polyurethane variant features excellent yellowing resistance against UV exposure, so the vibrance of the rock aggregates can be preserved for an extended period.

## Product Highlights

---

### Heat & UV Resistance

---

Stable in extreme heat. No softening, cracking or deformation, resisting yellowing under UV exposure

### Water Permeability & Hydro-Stability

---

Fully permeable for excellent drainage when use as floors

Chemically stable against long-term immersion

### Glossy Look

---

Enhances natural stone aggregates with glossy finish – reminiscent of polished marble

## Applications

---

Indoor & Outdoor resin bound floors

Swimming pool floors

Coastal protection, submerged floors



*Consult our team for technical data & construction advice.*

# TERRATIGHT™ PU – FACTSHEET



## Datasheet

Properties	Component A	Component B
<b>Physical properties:</b>		
Appearance	Light yellow liquid	Transparent liquid
Viscosity (CPS,25°C)	3,500	2,500
Relative density (g/ml,25°C)	0.961	1.16
Water solubility	Insoluble	Immiscible
<b>Mixing properties:</b>		
Mixing ratio	1:1	
Pot life after mixture (25°C)	40±10 minutes	
Final curing time (25°C)	6~8 hours	

## Construction (Standard Resin Bound Floors)

- Mix A and B components (1:1 ratio) thoroughly using a mixing gun or any dry object, until the mixture appears uniform.
- Immediately afterwards, pour the mixture onto the intended materials for binding. Thoroughly mix the materials with the resin until all surfaces are evenly covered with resin. Consult our team for resin usage.
- Pave the materials onto the base layer and level the surface. Leave the structure dry and untouched for 1 day, before the surface is ready to use.
- Process may vary case by case.

## Tips & Warnings

- Always strictly adhere to **1:1 ratio** when mixing A and B components. Do NOT alter the ratio. Always use a scale for accurate measurement.
- This resin is sensitive to water before and during curing. Make sure the containers, tools, binding materials, and base layer are **completely dry** before and during the construction and avoid construction in rainy or humid weather. Tightly seal each unfinished container immediately after use.
- The pot life of this resin is **40±10 minutes** after mixture. Schedule the construction accordingly. In extremely hot weather (40+°C), the pot life of this resin could noticeably shorten. Cool down the resin and the binding materials right before mixture will significantly improve the condition.

# TERRATIGHT™ EPOXY

---



**SYNERGY &  
PROSPERITY**

TerraTight™ EPOXY (Chemical name: EP-231) is a transparent two-component epoxy adhesive for indoor and outdoor resin-bound rock aggregate floor construction. This epoxy variant excels in bonding strength, so it is suited for heavy-duty usages.

## Product Highlights

---

### Superior Bonding Strength

---

Endures vehicular & pedestrian traffic for an extended period

### Water Permeability & Hydro-Stability

---

Fully permeable for excellent drainage when use as floors

Chemically stable against long-term immersion

### Glossy Look

---

Enhances natural stone aggregates with glossy finish – reminiscent of polished marble

## Applications

---

Resin bound floors

Epoxy Floor Paint

Swimming pool floors

Coastal protection, submerged floors



*Consult our team for technical data & construction advice.*

# TERRATIGHT™ EPOXY – FACTSHEET



## Datasheet

	Component A	Component B
<b>Physical properties:</b>		
Appearance	Transparent liquid	Transparent liquid
Viscosity (CPS,25°C)	3,000~6,000	250
<b>Mixing properties:</b>		
Mixing ratio	3:1	
Pot life after mixture (25°C)	120~180 minutes	
Final curing time (25°C)	24 hours	
Tensile Shear Strength (Teak vs Teak)	5.63MPa	

## Construction (Standard Resin Bound Floors)

- Mix A and B components (3:1 ratio) thoroughly using a mixing gun or any dry object, until the mixture appears uniform.
- Immediately afterwards, pour the mixture onto the intended materials for binding. Thoroughly mix the materials with the resin until all surfaces are evenly covered with resin. Consult our team for resin usage.
- Pave the materials onto the base layer and level the surface. Leave the structure dry and untouched for 2 days, before the surface is ready to use.
- Process may vary case by case.

## Tips & Warnings

- Always strictly adhere to **3:1 ratio** when mixing A and B components. Do NOT alter the ratio. Always use a scale for accurate measurement.
- This resin is sensitive to water before and during curing. Make sure the containers, tools, binding materials, and base layer are **completely dry** before and during the construction and avoid construction in rainy or humid weather. Tightly seal each unfinished container immediately after use.
- The pot life of this resin is **120±10 minutes** after mixture. Schedule the construction accordingly. In extremely hot weather (40+°C), the pot life of this resin could noticeably shorten. Cool down the resin and the binding materials right before mixture will significantly improve the condition.

# TERRATIGHT™ EPOXY WALL



**SYNERGY &  
PROSPERITY**

TerraTight™ EPOXY WALL (Chemical name: CPA-003/BS-3042) is a transparent two-component epoxy adhesive for indoor and outdoor resin-bound rock aggregate wall construction. This variant is designed to be paved on vertical surfaces and are highly hydro-stable so it can be used as aquarium and swimming pool walls.

## Product Highlights

### PAVE FRIENDLY

Paste appearance designed for easy paving

### Water-Proof & Hydro-Stability

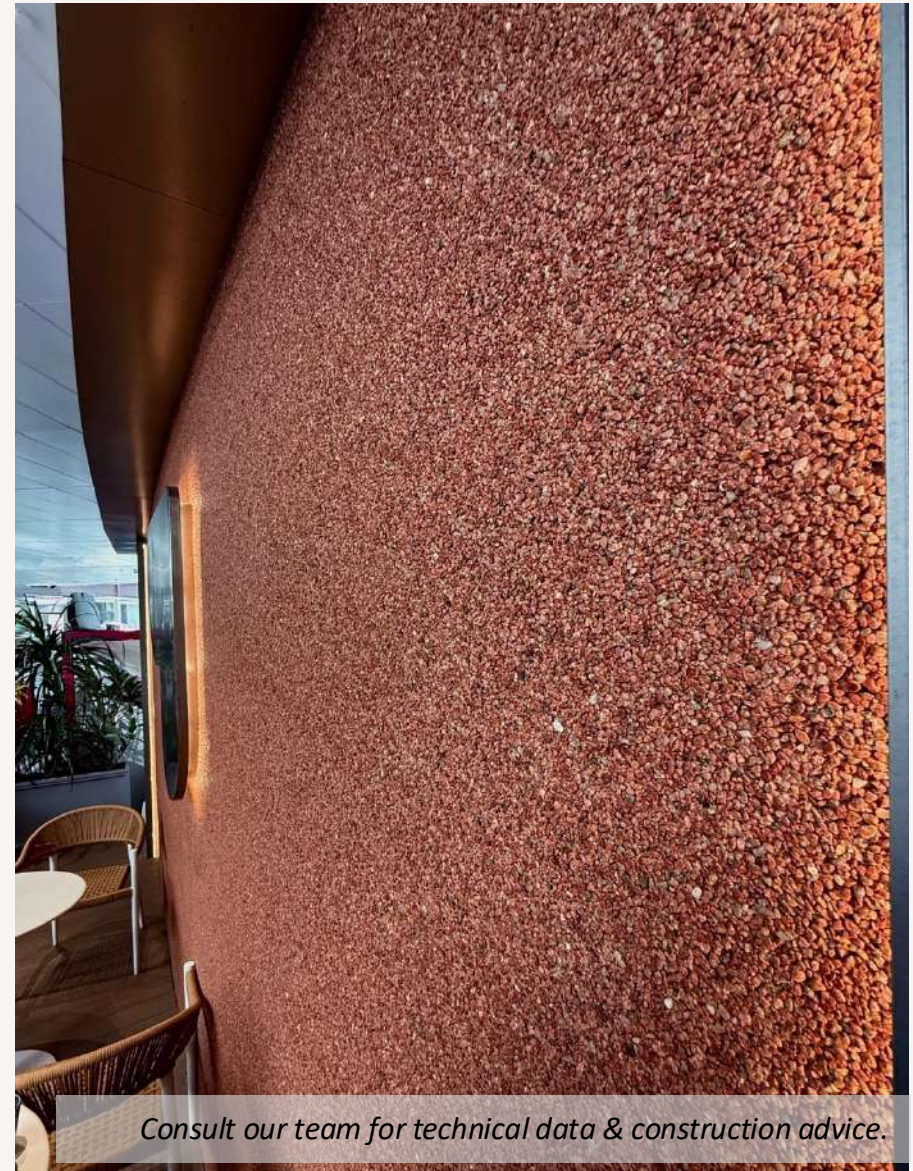
Fully protect subbase from water.

Withstand long-term submersion

## Applications

Indoor & outdoor walls

Aquarium & swimming pool walls



*Consult our team for technical data & construction advice.*

# TERRATIGHT™ EPOXY WALL – FACTSHEET



## Datasheet

	Component A	Component B
<b>Physical properties:</b>		
Appearance	Milky paste	Transparent liquid
<b>Mixing properties:</b>		
Mixing ratio	3:1	
Pot life after mixture (25°C)	60~180 minutes	
Final curing time (25°C)	24 hours	

## Construction (Standard Resin Bound Floors)

- Ensure aggregates are dry and clean. The base surface must be solid, flat, dry, clean, and free of oil contamination.
- Fully mix resin components A and B (A : B = 3 : 1), leave some spare A component unmixed.
- Apply a layer of component A with a brush on the subbase as a primer coat.
- Add aggregates and continue mixing until uniform (Aggregates: Adhesive (A+B combined) = 4~7 : 1).
- Manually apply the mixture onto the wall with a trowel and smoothen the layer.

## Tips & Warnings

- Always strictly adhere to **3:1 ratio** when mixing A and B components. Do NOT alter the ratio. Always use a scale for accurate measurement.
- This resin is sensitive to water before and during curing. Make sure the containers, tools, binding materials, and base layer are **completely dry** before and during the construction and avoid construction in rainy or humid weather. Tightly seal each unfinished container immediately after use.
- The pot life of this resin is **60~180 minutes** after mixture. Schedule the construction accordingly. In extremely hot weather (40+°C), the pot life of this resin could noticeably shorten. Cool down the resin and the binding materials right before mixture will significantly improve the condition.



**SYNERGY &  
PROSPERITY**

# SOIL & SAND STABILIZER

# TERRATIGHT™ STABILIZER



TerraTight™ Stabilizer (Chemical name: CPA6000) is a ready-to-use, single-component, water-based soil and sand stabilizer and dust suppressant engineered to bind soil particles together and enhance soil strength. This professional-grade solution is specifically designed for soil and sand stabilization applications, providing durable, stable, and dust-free surfaces for a variety of civil engineering, landscaping, and construction projects.

unlike simple compaction which only densifies soil particles for short-term firmness, a soil and sand stabilizer chemically bonds and strengthens the soil and sand –based structure for long-lasting stability, durability, and resistance to erosion and settlement—ensuring consistent performance even under environmental stress and heavy usage.

## Product Highlights

### High Penetrability & Bonding Strength

5+cm deep penetration & firm binding

### Easy Application & Maintenance

Apply and reinforce simply by spraying, no extensive construction

### Plant & Soil Friendliness

Safe for vegetation and surrounding environment

### Effective Dust & Dirt Control

Long-term prevention of dust & loose particles



*Consult our team for technical data & construction advice.*

# TERRATIGHT™ STABILIZER – FACTSHEET



## Datasheet

	Value
Pot life (25°C)	40-60 minutes
Final curing time (25°C)	72 hours
Viscosity (CPS, 25°C)	4,000
Water solubility	Dilatable
Appearance	Milky light blue liquid
Effective Chemical Composition	Acrylic Copolymer

## Construction (Soil & Sand Stabilizer)

- Compact the gravel before applying chemical.
- Mix the product with water (product : water = 1:3~4), actual ratio may vary depending on the gravel composition. Stir thoroughly until the mixture is uniform and free of lumps.
- Spray the mixture evenly over the gravel surface. Spray in a consistent, overlapping pattern. Scratch and rotate the gravel surface for even coverage.
- Run a plate compactor twice over the surface and then use a sanding machine to flatten the surface. Keep spraying more chemical mixture in the process whenever dry gravels are visible.
- Spray a top-coat layer (product : water = 1:1 or undiluted) onto the surface. Allow 24-48 hours drying depending on the weather.

## Tips & Warnings

- Usage and water mixing ratio vary depending on the gravel composition and the weather. Prudence is required. Consult our team for professional advice.
- Do not apply excessive pressure (e.g. overuse of compactor) on the surface under construction.



**SYNERGY &  
PROSPERITY**

# WALL PAINT

# TERRATIGHT™ SAND PAINT

---

TerraTight™ Sand Paint is an acrylic-based wall paint system with an emphasis on natural sandy look, while maintaining long-term durability. It utilizes authentic premium red sand, giving it the serene texture of the desert in the evening. Our high-caliber acrylic resin makes application easy and environmentally friendly and forms a hard shell that protects the substrate for years in all weather conditions. Optionally, we offer water-based polyurethane topcoat for additional protection.

## Product Highlights

---

### Natural Sand Aesthetics

---

Seamless, natural look

### Elasticity & Breathability

---

Cracks & bubbles prevention

### Superior Strength & Durability

---

Withstands harsh weather, tear & wear

### UV & Chemical Resistance

---

Resists fading & yellowing



*Consult our team for technical data & construction advice.*

# TERRATIGHT™ SAND PAINT– FACTSHEET

## Paint System

Type	Product Name	Application Method
Primer	Acrylic Primer	1 coat, roller
Main Coat	Mixture of TerraTight™ Ease and natural red sand	2 coats, trowel
Topcoat	Water-based acrylic or polyurethane topcoat	1 coat, roller/spray

## TerraTight™ Ease Datasheet

	Value
Pot life (25°C)	40-60 minutes
Final curing time (25°C)	72 hours
Water solubility	Dilatable

## Construction

- The paint system can be applied on any smooth, dry and strong substrate. A layer of putty is recommended for better effect.
- Spray or roll a layer of TerraTight™ Ease as a primer. Do not wait for this layer to cure.
- Mix red sand with TerraTight™ Ease (resin : sand = 1:6~8). The mixture should look paste-like without any residual liquid. Dilution with water at the risk of decreasing strength is possible.
- Use a trowel to pave the mixture thinly on the wall immediately after the primer layer is applied.
- Wait for the layer to cure and then apply a second layer in the same fashion.
- Optionally, use pattern-making tools to create patterns.
- After the layer is cured, apply a topcoat.

## Tips & Warnings

- **Application Environment:** Apply at temperatures between 5–35°C and relative humidity ≤85%. Ensure good ventilation for interior work. Do not apply exterior coatings during rain, snow, fog, or strong winds.
- **Storage:** Store in a cool, dry place at 5–35°C with containers tightly sealed.
- **Tool Cleaning:** Clean tools with water immediately after use. Seal and store any unused material properly.

# QUARTZ TEXTURE PAINT

---

Quartz texture wall coating utilizes engineered mineral aggregates bound by high-performance copolymers to create seamless, decorative outdoor and indoor surfaces. We provide a comprehensive multi-coat system provides enhanced protection against environmental stressors while maintaining aesthetic appeal.

The quartz aggregates (1.5-2.0 mm particle size) are coated with UV-stable pigments, ensuring color retention for over a decade under intense sunlight. The binder system utilizes acrylic or polyurethane resins depending on specific performance requirements, offering flexibility in formulation for different climate conditions.

## Product Highlights

---

### Natural Stone Aesthetics

---

Rich, multi-layered finishing

### Elasticity & Breathability

---

Cracks & bubbles prevention

### Superior Strength & Durability

---

Withstands harsh weather,  
tear & wear

### UV & Chemical Resistance

---

Resists fading &  
yellowing



*Consult our team for technical data & construction advice.*

# QUARTZ TEXTURE PAINT – FACTSHEET

## Test Result

	Standard	Result
VOC Content (g/L)	<100	22
Formaldehyde Content (mg/kg)	<50	29
Benzene Content (mg/kg)	<100	50
Pb Content (mg/kg)	<90	2

## Paint System

Type	Product Name	Application Method
Primer	Water-based primer	1 coat, roller
Main Coat	Quartz paint	2 coats, trowel
Topcoat	Water-based acrylic or polyurethane topcoat	1 coat, roller/spray

## Construction

- **Substrate Inspection and Preparation:** Verify structural integrity (minimum 2500 psi compressive strength), removing loose particles and contaminants. Fill fractures >1mm width with elastic polyurethane sealant.
- **Primer Application:** Dilute the primer with 15–20% water, mix thoroughly, and apply one even coat with a roller.
- **Coat Application:**
  - Apply the first coat of the quartz wall coating with a stainless-steel trowel, spreading thinly and evenly. The thickness should be 1-1.5x that of the quartz particles.
  - Once dry, apply a second thin coat. The thickness should be 2-3x that of the quartz particles.
- **Topcoat Application:** Apply 2 coats of the protective topcoat using a roller or spray for enhanced protection and durability.

## Tips & Warnings

- **Application Environment:** Apply at temperatures between 5–35°C and relative humidity ≤85%. Ensure good ventilation for interior work. Do not apply exterior coatings during rain, snow, fog, or strong winds.
- **Storage:** Store in a cool, dry place at 5–35°C with containers tightly sealed.
- **Tool Cleaning:** Clean tools with water immediately after use. Seal and store any unused material properly.

# MICRO-CEMENT TEXTURE PAINT

Micro-cement texture paint system is a highly versatile, seamless wall and floor coating system designed to achieve a unified, modern aesthetic across a range of architectural spaces. Inspired by the concepts of minimalism and flexibility, this material enables designers to create integrated surfaces from floor to ceiling and from interior to exterior, using a single product for consistent color and texture throughout a project. We provide a comprehensive multi-coat systematic solution for both floors & walls, making seamless connection between the surfaces possible.

## Product Highlights

### Exceptional Versatility

Unlimited combinations of colors & texture to unlock creativity

### Environmental Friendliness

Water-based, odorless formula free from VOCs

### Seamless Smooth Finishing

Resistant to dust, yellowing and stains

### UV & Chemical Resistance

Resists fading & yellowing



*Consult our team for technical data & construction advice.*

# MICRO-CEMENT TEXTURE PAINT – FACTSHEET

## Test Result

	Standard	Result
VOC Content (g/L)	<100	22
Formaldehyde Content (mg/kg)	<50	29
Benzene Content (mg/kg)	<100	50
Pb Content (mg/kg)	<90	2

## Paint System

Type	Product Name	Application Method
Primer	Water-based primer	1 coat, roller
Main Coat	Quartz paint	2 coats, trowel
Topcoat	Water-based acrylic or polyurethane topcoat	1 coat, roller/spray

## Construction

- **Substrate Inspection and Preparation:** Ensure the surface is clean and properly prepared.
- **Primer Application:** Dilute the primer with 10–15% water, mix thoroughly, and apply one even coat with a roller.
- **Main Coat Application:**
  - Apply the first coat of liquid micro cement with a stainless-steel trowel, spreading thinly and evenly.
  - Once dry, apply a second thin coat. While the material is partially dry, use a finishing board to create desired. Repeat light polishing at different drying stages to achieve the final pattern.
- **Topcoat Application:** Apply two coats of the water-based topcoat using a roller or spray for enhanced protection and durability.

## Tips & Warnings

- **Application Environment:** Apply at temperatures between 5–35°C and relative humidity ≤85%. Ensure good ventilation for interior work. Do not apply exterior coatings during rain, snow, fog, or strong winds.
- **Storage:** Store in a cool, dry place at 5–35°C with containers tightly sealed.
- **Tool Cleaning:** Clean tools with water immediately after use. Seal and store any unused material properly.

# TERRATIGHT™ SEALANT



TerraTight™ Sealant (Chemical name: HY-331) is a single-component, water-based protective coating engineered to create durable, flexible waterproof membranes **for walls and ceilings**. This advanced acrylic formulation seals cracks, joints, and worn surfaces while repelling water, protecting structures from leaks and water ingress, ideal for both interior and exterior applications. This product can be directly applied to existing walls as an invisible layer of protection. If needed, water-based acrylic pigment can be added to the product to alter its colors.

## Product Highlights

### Excellent Flexibility & Elasticity

Stretches and contracts with substrate movement preventing cracks  
Fast-Setting & Ready to Use

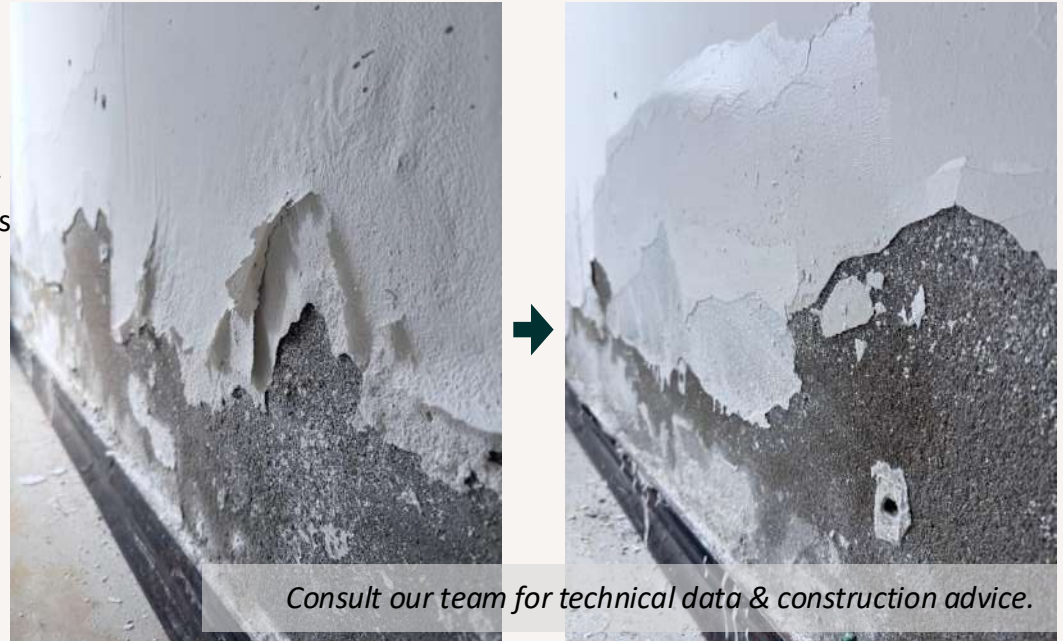
No mixing required, fast curing

### Eco-Friendly & Safe

100% water-based, solvent-free, non-toxic, and odorless

### Superior Adhesion & Bonding

Forms strong bonds to concrete, metal, wood, PVC, etc. without primers



*Consult our team for technical data & construction advice.*

# TERRATIGHT™ SEALANT – FACTSHEET



## Datasheet

	Value
Pot life (25°C)	30 ± 10 minutes
Final curing time (25°C)	24 hours
Viscosity (CPS, 25°C)	8,000
Water solubility	Dilatable
Appearance	Transparent Paste
Effective Chemical Composition	Acrylic Copolymer

## Construction

- Ensure surface is clean, dry, and free from dust, dirt, oils, and loose particles.
- Shake or stir the sealant thoroughly for 2-3 minutes before each use to ensure uniformity.
- Apply 2 thin coats using a roller, or a brush. Let the first coat dry fully (about one sunny day) before applying the second.
- Work from bottom to top to ensure even coverage.
- Ensure no water contact within **1 day** after construction.

## Tips & Warnings

- Best results obtained in mild weather; avoid application in extreme heat or cold.
- For porous or absorbent surfaces, one additional primer coat may improve adhesion.
- Do not dilute unless specifically recommended in technical documentation.
- Clean all application tools with water immediately after use before product dries.
- The pot life of this sealant is **30±10 minutes** under standard conditions. This is the usable working time after mixing.

# WASHED STONES

We supply a wide range of premium-quality tumbled & washed stone particles (from 1mm to 6mm).

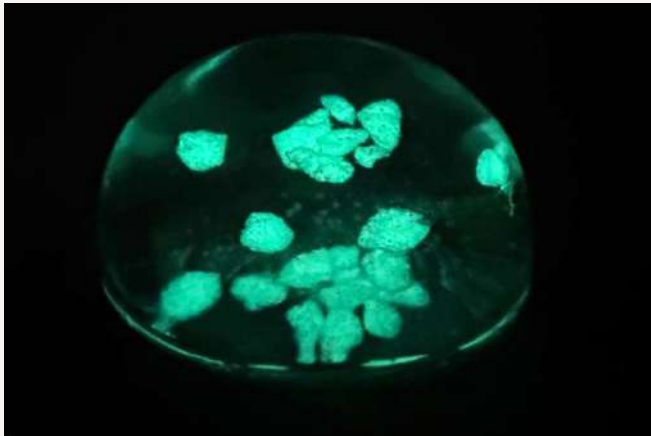
Washed stones offer a premium choice for stone-paved surfaces, distinguished by their uniform size and smooth, rounded shape compared to ordinary crushed stones. This consistency creates a visually harmonious and elevated aesthetic, enhancing both the sophistication and natural appeal of any landscaping or resin bound application.

Unlike ordinary crushed stones, the absence of fine particles and consistent dimensions allows the resin to evenly coat and bind with less excess, resulting in significantly lower resin consumption during installation. This efficiency translates into notable savings for any project.



# GLOW-IN-DARK ROCKS

We supply highly valuable and rare glow-in-dark rock aggregates in yellow-green and blue-green color. These specialty stones absorb natural or artificial light during the day and emit a soft, ambient glow at night, enhancing visual interest and safety in pathways, gardens, and decorative features. As a rare offering in the UAE market, our glow-in-the-dark stones help set projects apart with innovative, lasting beauty both day and night.





**SYNERGY &  
PROSPERITY**

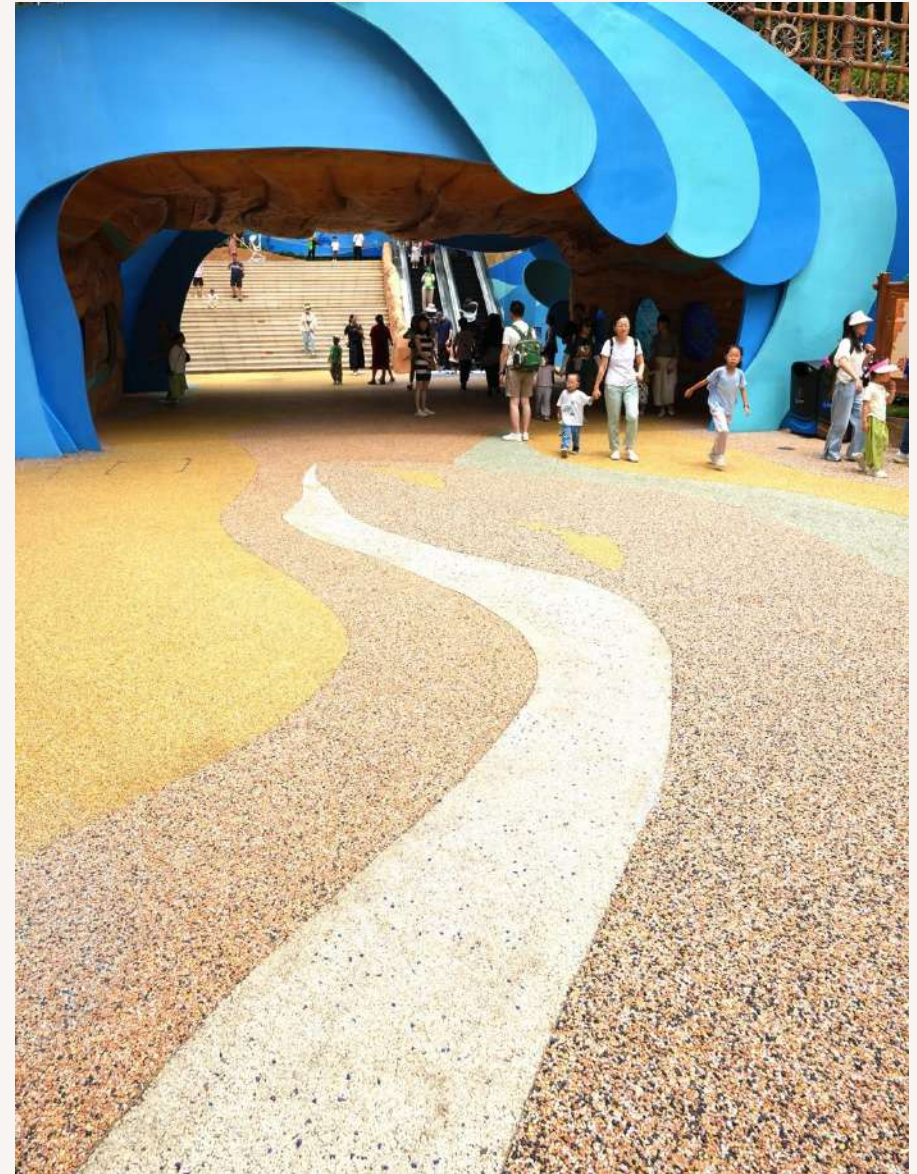
**ADDENDUM:**

**WHY RESIN BOUND**

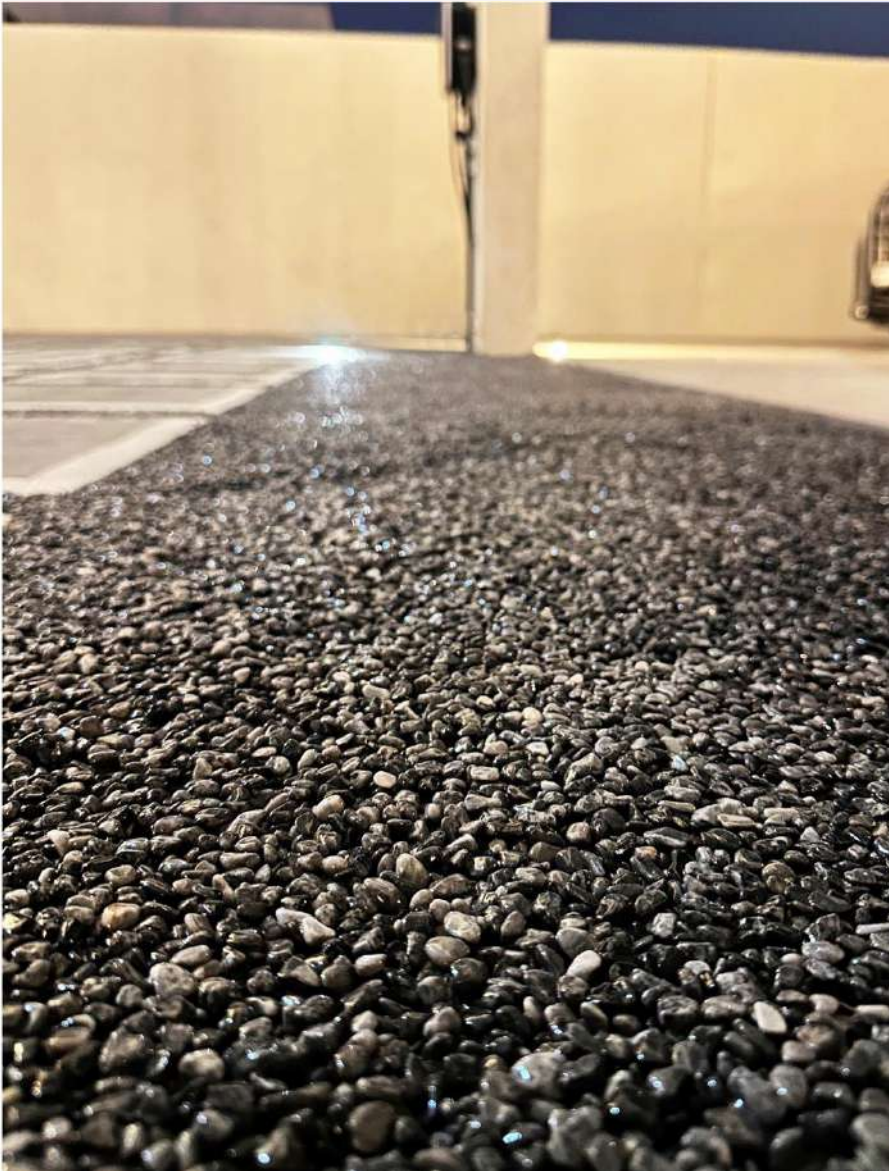
# RESIN BOUND – FLAWLESS AESTHETICS

We specialize in providing resin-bound solutions – surfaces form by adhering small rock pieces with chemical resin - that transform loose aggregates into **seamless, visually stunning** surfaces.

Our expertly engineered adhesives can bind aggregates to form various surfaces, unlocking endless creative possibilities, enabling **precise customization** of color, pattern, and texture for truly unique landscape designs.



# RESIN BOUND – DURABILITY & LOW MAINTENANCE



Resin-bound products are **cold-mixed solutions** that require no heating, specialized machinery, or complex construction procedures. This fundamental advantage significantly reduces installation costs and simplifies logistics, eliminating the need for hot-plant facilities, heating equipment, and specialized skilled labor traditionally required for asphalt and other paving materials.

Our resin-bound solutions are engineered for exceptional long-term resilience. They maintain their integrity, **resisting softening, cracking, or deformation** even under extreme heat, high humidity, and extended periods of submersion . This ensures lasting performance and reliability.

**Cleaning is straightforward** – simply rinse and power-wash the surface to remove dirt and litter.

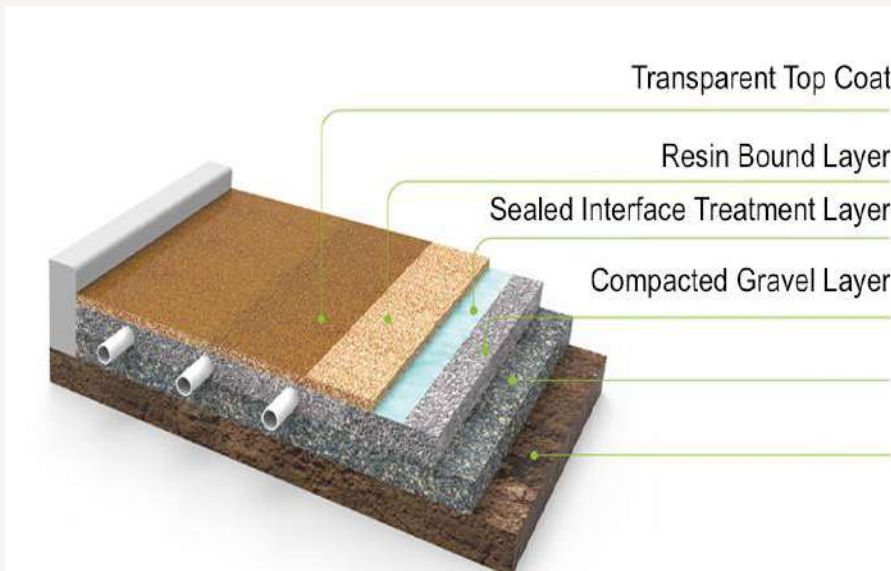
Minor wear is easily addressed with partial re-application of adhesive, making **maintenance simple and cost-effective.**

# RESIN BOUND – PERMEABILITY & DRAINAGE



The inherent water permeability of resin-bound surfaces significantly **enhances road drainage and flood prevention**. Whereas traditional paved surfaces cause rainwater to pool and rapidly overwhelm drainage systems, resin-bound surfaces allow water to directly infiltrate the ground beneath.

This natural infiltration drastically reduces surface runoff volume, alleviating pressure on stormwater management infrastructure and allowing the ground itself to naturally absorb and manage rainfall, thereby mitigating the risk of localized flooding more effectively.



## USE CASE – PARK FLOORING



Resin bound is perfect for large scale pedestrian walkway demanding both **unique design and long-term durability** against constant wears and tears.

Our resin helps Guangzhou Ocean World withstand the hot and humid weather of southern China, as well as constant splashes of water from the aquariums.

Our chemicals are **emission-free, odorless and nontoxic**. After curing, children can safely play on these grounds.



# USE CASE – WALKWAY DECORATION

Resin bound decorations elevate the aesthetics of walkways. The use of resin prevents the common problems of loose rocks such as **scattering, tripping hazards, and the need for frequent raking.**

Resin bound surfaces also allow rainwater to permeate through, keeping the area free from puddles and erosion, while offering a **clean, dust-free, and weed-resistant** finish that is safe and durable for daily foot traffic.

We chemically engineered our adhesives to be highly **yellowing-resistant**, allowing the surface to shine for years.



# USE CASE – COASTAL PROTECTION

Resin bound forms a seamless, fully permeable barrier that prevents surface runoff and erosion by allowing water to drain through naturally. Resin bound **reduces washout and displacement of aggregates**, maintaining the structural integrity of embankments and pathways

Our resin is engineered to be **chemically stable in long-term submerged conditions in sea water.**

